

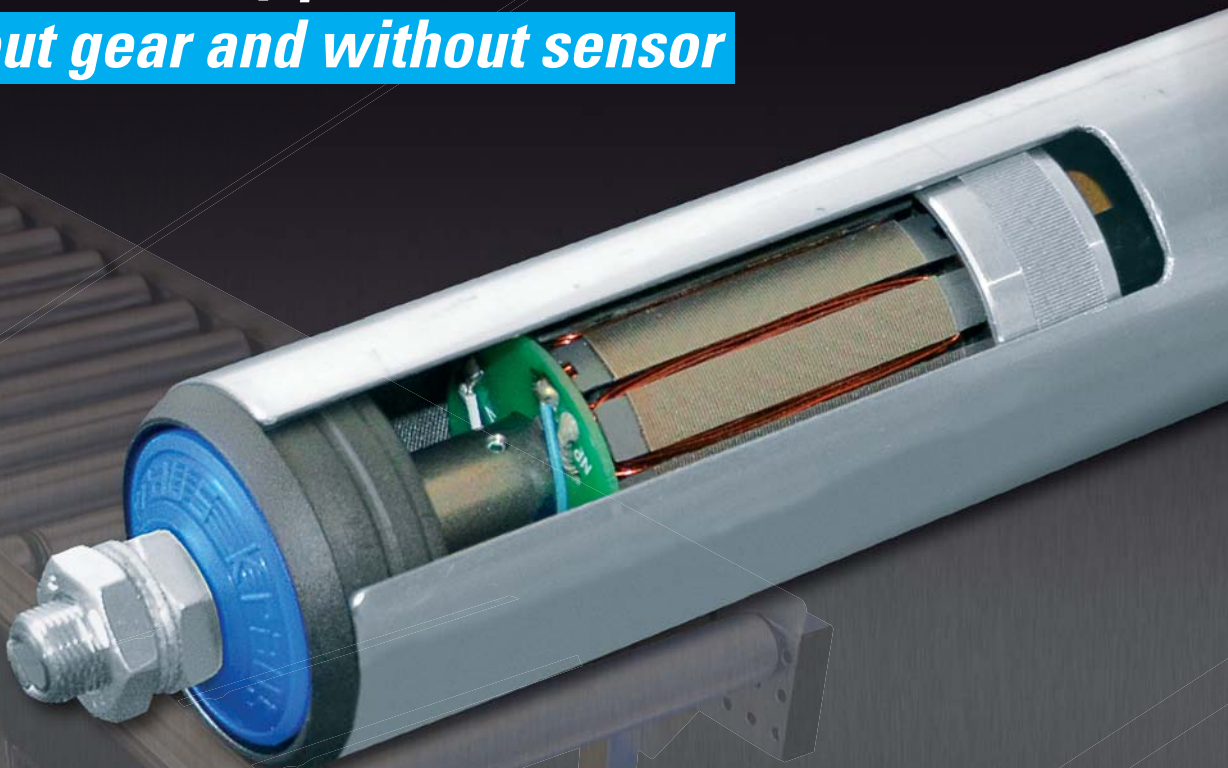
The Innovation

# Drive Roller **OMEGA 50**



***Affordable cutting edge techn***

***The first serially produced 50 mm drive roller  
without gear and without sensor***



***OMEGA 50, because TODAY's stan***

# *ology with highest reliability*

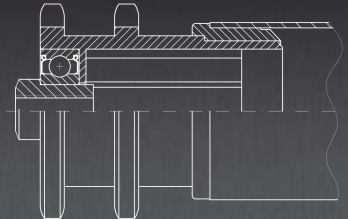
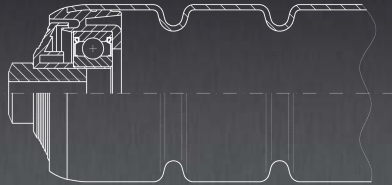
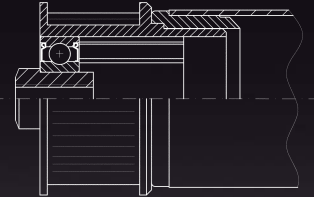
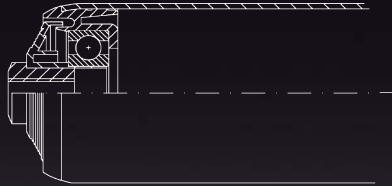
- **best performance**  
(see back page)
- **load test is exceeding 10 million cycles at 30 kg; 2000 cycles per hour!**
- **freight up to 100 kg per drive roller**
- **infinitely variable up to 2 m/s**
- **freely selectable constant speeds**
- **maintenance-free for many years**
- **highest reliability: sensorless, gearless, permanent magnet motor**
- **top in efficiency and energy efficiency**
- **easy integration, also into existing systems**
- **very low noise level, <50 dB (gearless)**
- **advanced Logic Funktionen**

*standard is TOMORROW's past*

**kraus**  
Eine Idee voraus

## TECHNICAL DATA:

- Brushless 3 ~ synchronous high-torque motor
- Power: up to 70 W (adjustable low current consumption)
- Roller diameter: 50 mm
- Roller lengths: > 165 mm
- Torque: up to 2.5 Nm without gear; Gear: optional
- Conveyor speeds: continuously selectable up to 2 m/s
- Mass conveyed: up to 100 kg per drive roller
- Supply voltages: 24 V and 48 V
- Operating modes: S1, S3, acceleration, deceleration, magnetic holding torque, freewheeling (no gear box)
- Speed control: analogue and digital
- Full protection: short circuit, over current, over voltage
- Rated ambient temperature: 0 °C to 40 °C (option to -30 °C)
- Degrees of protection: IP 54, IP 20
- Drives: round-, timing-, chain- and flat-belts, chains, without drive head for direct drives and conveyor belts



## KRAUS Betriebsausstattung und Fördertechnik GmbH

Tel. +43(0)463/3860-68

Fax +43(0)463/3860-69

office@kraus.co.at

Sattnitzgasse 69

9020 Klagenfurt am Wörthersee

www.motorrolle.at